

# Who are Pewsey CLT?

- Pewsey CLT (PCLT) are a Community Benefit Society working with and for the village of Pewsey
- They were incorporated in November 2019 and operate with a Board of Directors and an Advisory Group made up of people from the local community
- They have significant support from Pewsey Parish Council

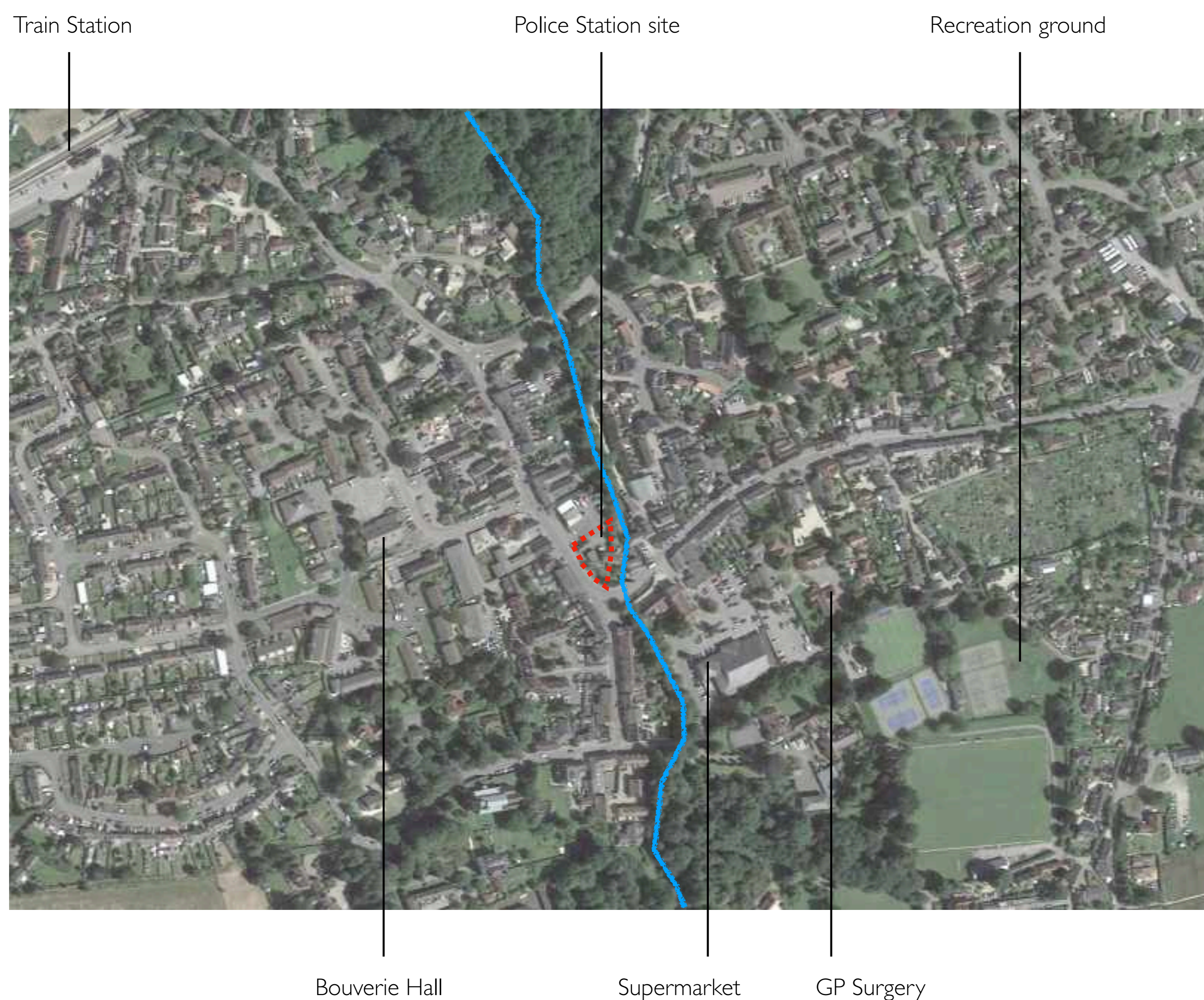
## What is a CLT?

- They provide affordable housing and help to deliver assets for the community.
- They are not part of a national or local government body and operate on a not-for-profit basis.
- They are community owned and controlled, with an open and democratic structure

## What are they proposing?

- PCLT are seeking to develop sites within Pewsey to provide housing and support for local individuals and families in need.
- They are looking to provide housing for affordable / social rent and Shared Ownership.
- These will be developed under a Community Right to Build Order before January 2024.
- The site of the former Police Station & House has been identified.

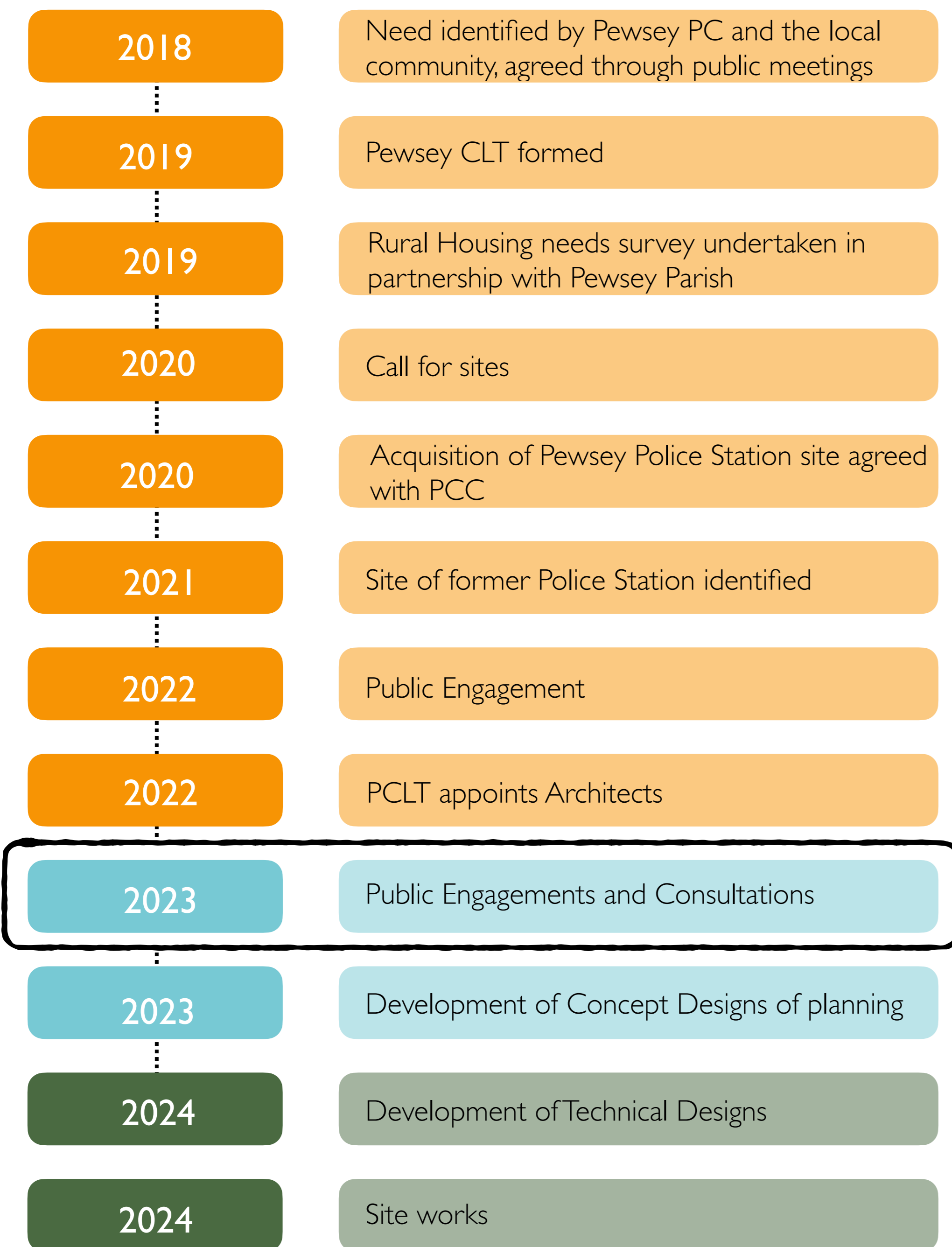
## Site Map





# Community Engagement

## Where are they in the process?



At the end of 2022 Pewsey CLT undertook a 'Have your say' engagement for the redevelopment of the former Police House site. Through leafletting, posting on social media and notice boarding, PCLT asked a number of questions about the type of housing that should be proposed for the site.

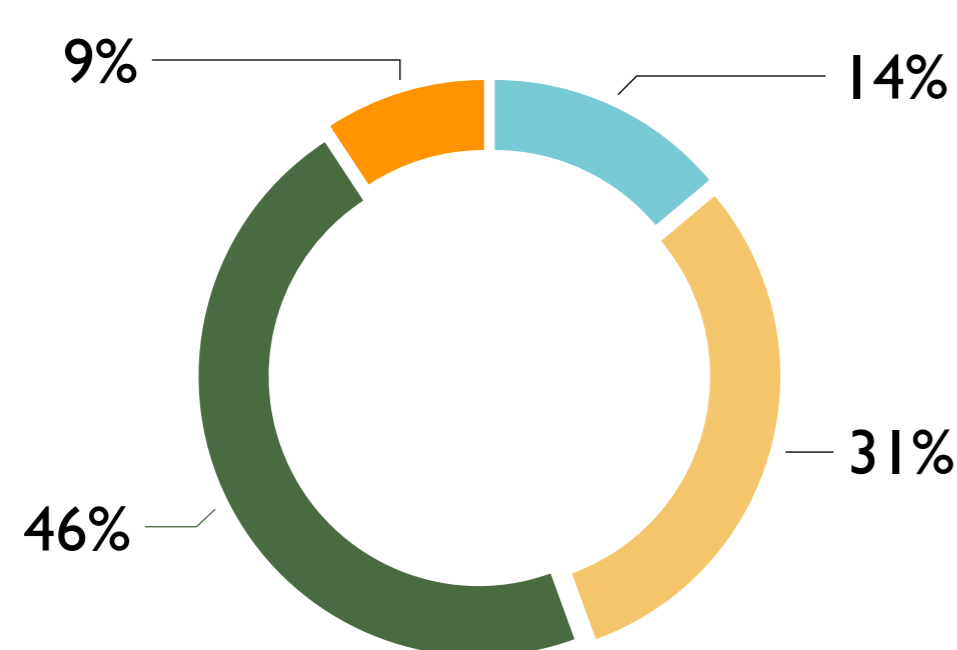
They received 125 responses, received online and on paper, from the local community which are captured below.

Using these results alongside information gathered from the local housing needs survey, PCLT were able to develop a brief for the redevelopment of the site:

- Renovation of the existing house (for shared ownership)
- Development of 1, 2 and 3 bedroom flats (for affordable rent)
- Re-provision of the bus stop and shelter
- Provision of a ground floor ancillary space
- On site parking
- A public open space.

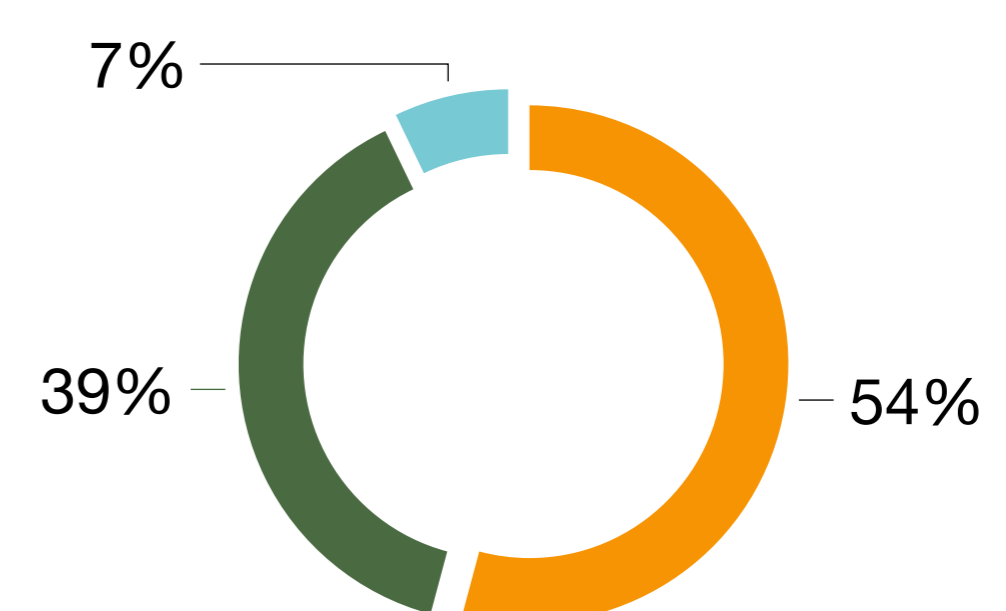
## What sort of affordable for rent housing do you wish to see at the Police site?

● Flats ● Houses ● Mix of both ● No opinion



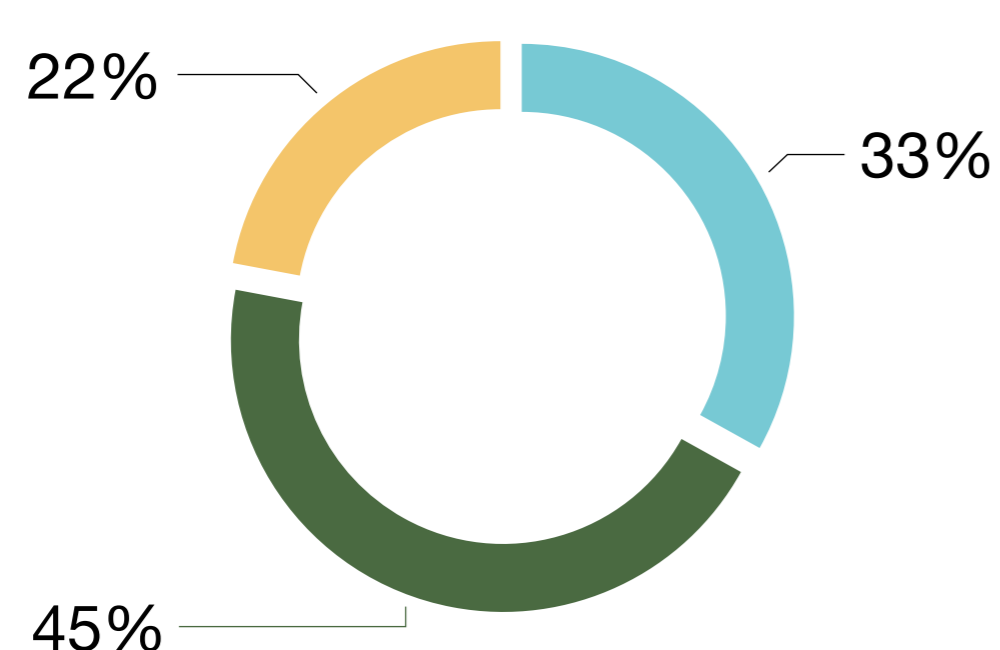
## Should the building be just energy efficient, or energy efficient and energy generating?

● Energy efficient ● Energy efficient & energy generating ● No opinion



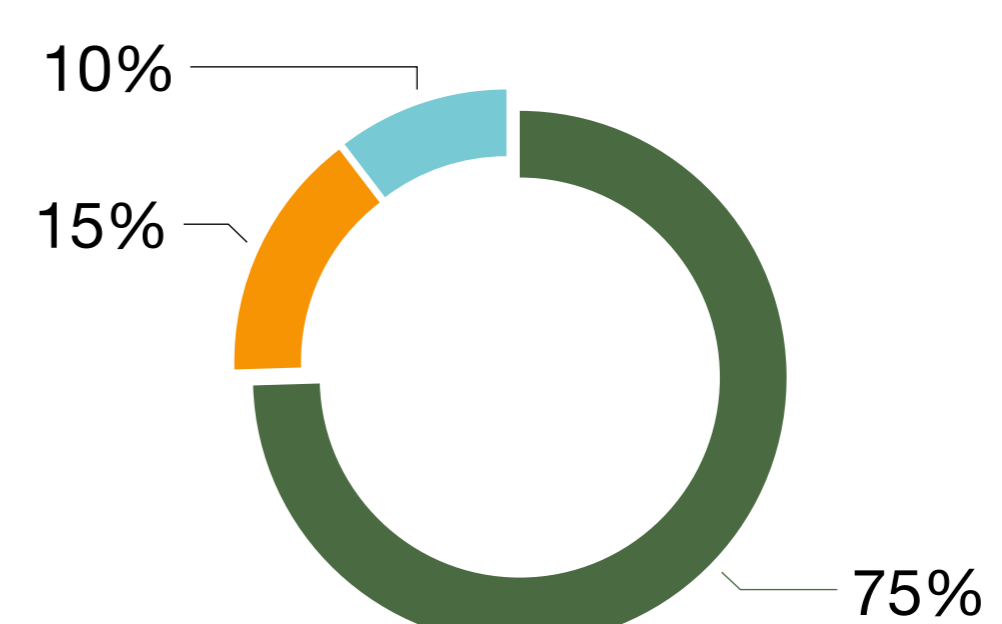
## We think that we should keep the car parking space to a minimum and encourage other forms of transport (cycling etc) do you agree?

● Yes ● No ● No opinion



## Should the development look like the central village buildings, or have a more modern design?

● Like the current buildings ● more modern design ● No opinion





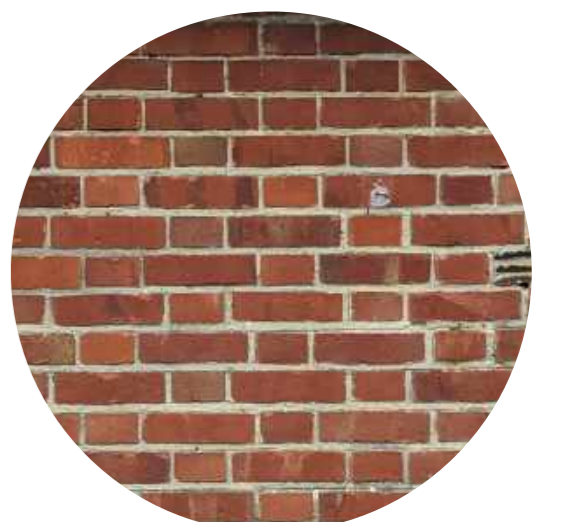
# Site Analysis



North Wessex Downs Area of Outstanding Natural Beauty



Pewsey Conservation Area - Grade 2 listed properties in close proximity



Red Brick



Painted Brick



Render

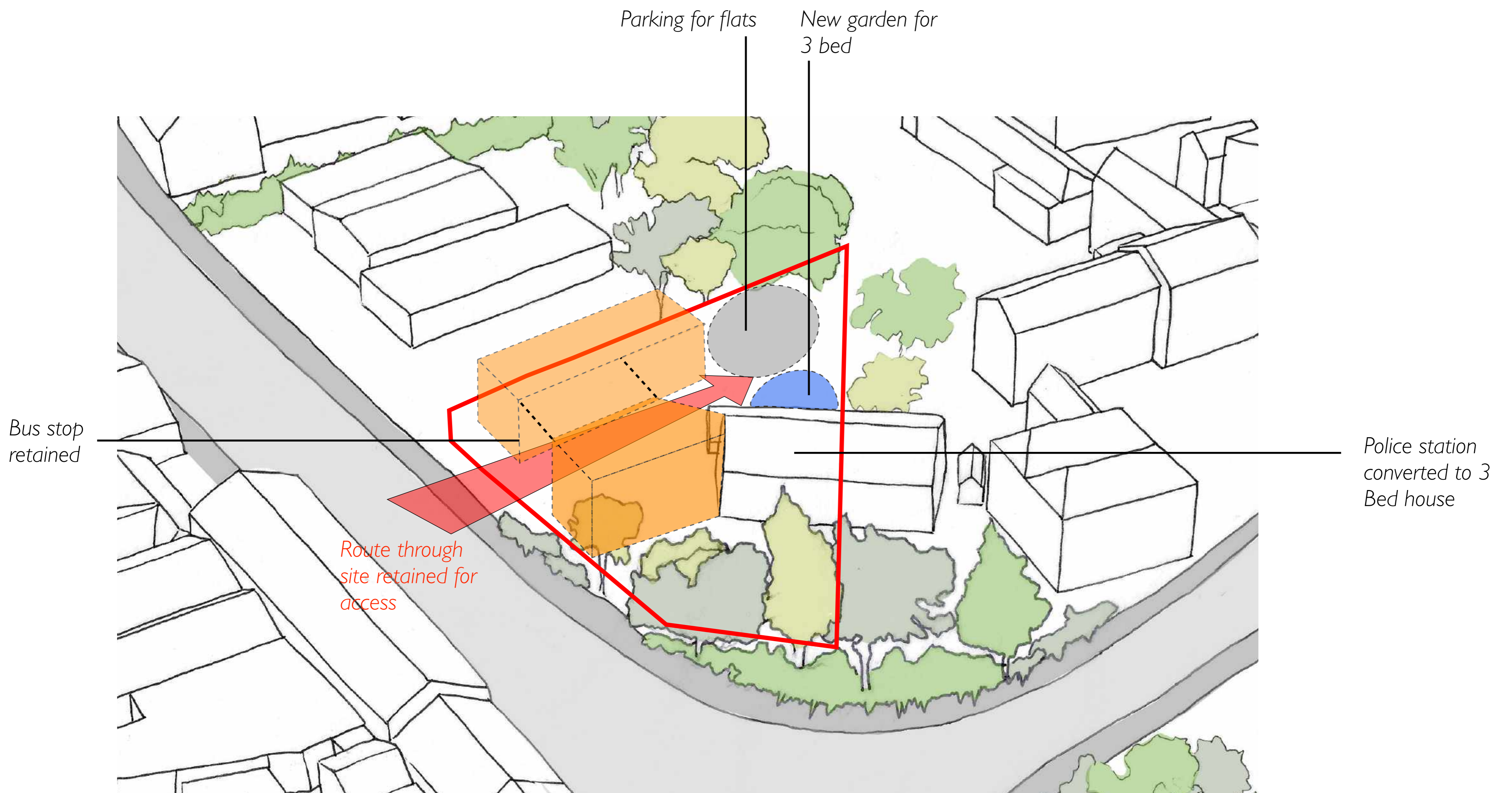
## Key Question

Should the proposals reflect the high street opposite?

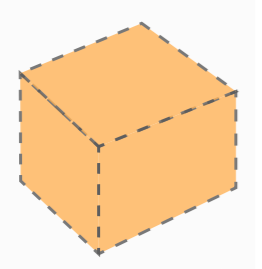
- Height
- Materials
- Proximity to pavement



# Site Response



Key:



Sites for development

## Housing Inspiration



1. Chapter House, Lichfield



2. St Johns, Lichfield



3. Steepleton, Tetbury



4. Minety



5. Lovedon Fields



6. Challender Court



7. Threshold Centre